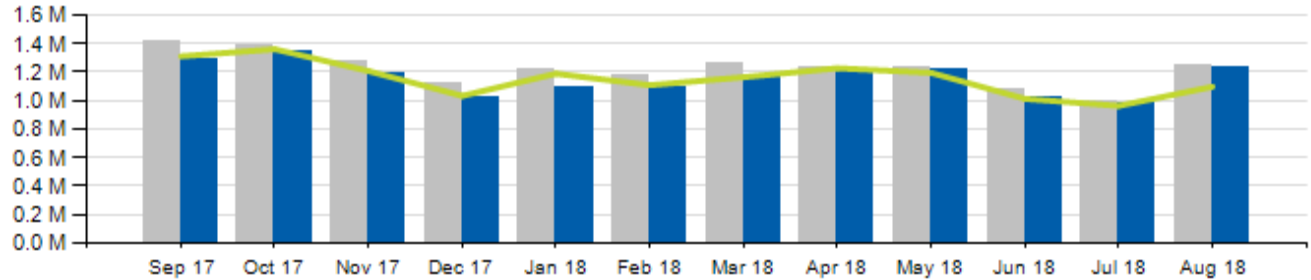


# August 2018 Ridership Report



# Local/Express Ridership

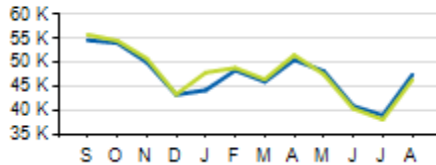
Total Ridership



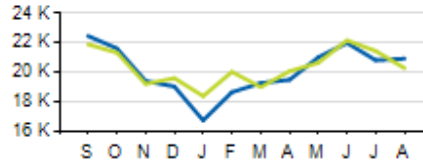
	ACTUAL	BUDGET	VARIANCE (% / #)		2017	VARIANCE (% / #)	
<b>TOTAL</b>	<b>1,233,110</b>	<b>1,200,897</b>	<b>+2.7%</b>	<b>+32,213</b>	<b>1,242,607</b>	<b>-0.8%</b>	<b>-9,497</b>
<b>LOCAL</b>	<b>1,147,868</b>	<b>1,111,371</b>	<b>+3.3%</b>	<b>+36,497</b>	<b>1,152,893</b>	<b>-0.4%</b>	<b>-5,025</b>
<b>EXPRESS</b>	<b>85,242</b>	<b>89,526</b>	<b>-4.8%</b>	<b>-4,284</b>	<b>89,714</b>	<b>-5.0%</b>	<b>-4,472</b>
<b>YTD TOTAL</b>	<b>9,006,965</b>	<b>9,056,327</b>	<b>-0.5%</b>	<b>-49,662</b>	<b>9,418,914</b>	<b>-4.4%</b>	<b>-411,949</b>

# Local/Express KPIs

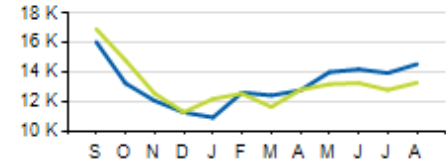
Average Fixed Ridership: Weekday



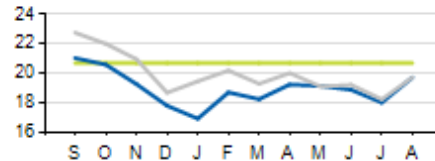
Average Fixed Ridership: Saturday



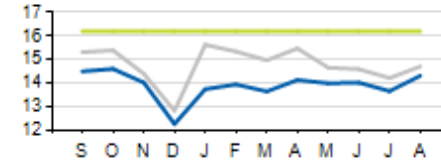
Average Fixed Ridership: Sunday



Passengers per Hour: Local



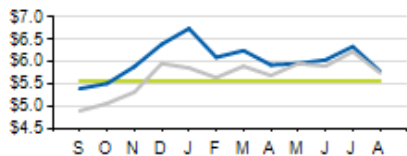
Passengers per Trip: Express



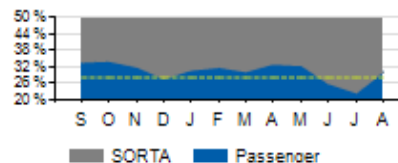
	ACTUAL	KPI/Budget	VARIANCE
<b>PASSENGERS PER HOUR (LOCAL)</b>	<b>19.7</b>	<b>20.7</b>	<b>-1.0</b>
<b>PASSENGERS PER TRIP (EXPRESS)</b>	<b>14.3</b>	<b>16.2</b>	<b>-1.9</b>
<b>AVERAGE RIDERSHIP (WD)</b>	<b>47,442</b>	<b>46,374</b>	<b>+1,068</b>
<b>AVERAGE RIDERSHIP (SA)</b>	<b>20,934</b>	<b>20,284</b>	<b>+650</b>
<b>AVERAGE RIDERSHIP (SU)</b>	<b>14,554</b>	<b>13,292</b>	<b>+1,262</b>

# Local/Express KPIs

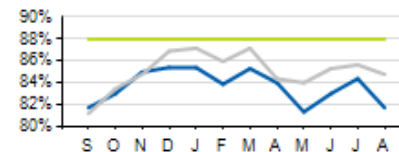
Cost per Passenger: Local



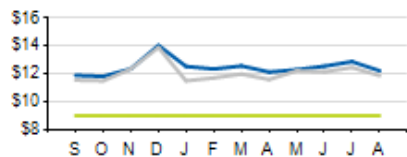
Service Cost Sharing: Local



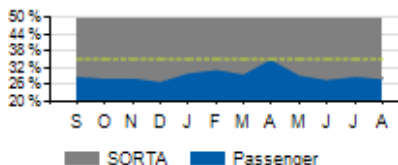
On-Time Performance: Local



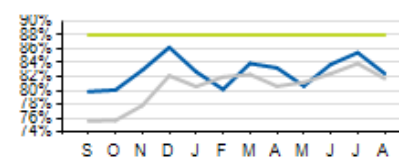
Cost per Passenger: Express



Service Cost Sharing: Express



On-Time Performance: Express



	ACTUAL	KPI	VARIANCE
<b>COST PER PASSENGER (LOCAL)</b>	<b>\$5.78</b>	<b>\$5.57</b>	<b>+\$0.21</b>
<b>COST PER PASSENGER (EXPRESS)</b>	<b>\$12.23</b>	<b>\$9.00</b>	<b>+\$3.23</b>
<b>COST RECOVERY (LOCAL)</b>	<b>30.1%</b>	<b>28.0%</b>	<b>+2.1%</b>
<b>COST RECOVERY (EXPRESS)</b>	<b>28.1%</b>	<b>35.0%</b>	<b>-6.9%</b>
<b>OTP (LOCAL)</b>	<b>81.7%</b>	<b>88.0%</b>	<b>-6.3%</b>
<b>OTP (EXPRESS)</b>	<b>82.4%</b>	<b>88.0%</b>	<b>-5.6%</b>

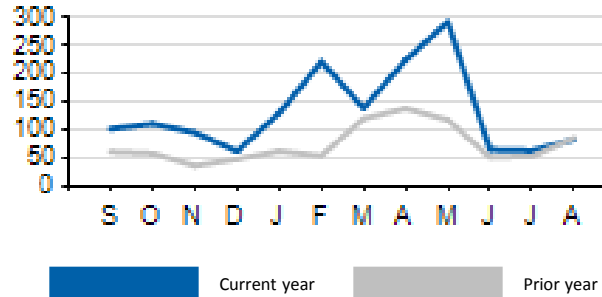
Current year

Prior year

KPI

# Local/Express Missed Trips

Missed Trips

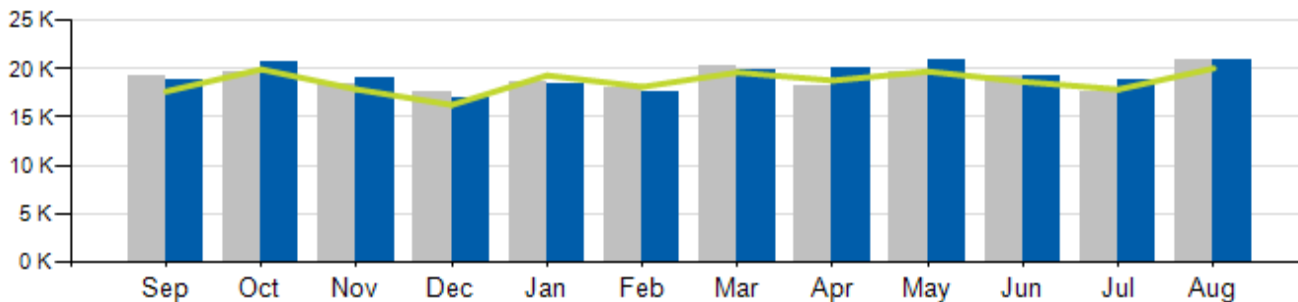


	ACTUAL	TOTAL TRIPS	% of Trips Operated
<b>MISSED TRIPS (ALL SERVICE)</b>	<b>83</b>	<b>65,614</b>	<b>99.9%</b>

REASON FOR MISSED TRIP	ACTUAL	% of MISSED TRIPS
NO OPERATOR AVAILABLE	21	25.3%
MECHANICAL ISSUE	31	37.3%
TRAFFIC INCIDENT	12	14.5%
LATE OPERATIONS	12	14.5%
OTHER	6	7.2%

# Access Ridership

Total Ridership

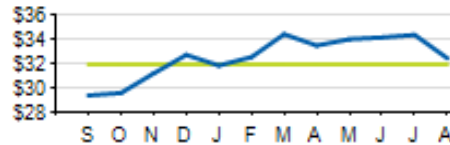


ACCESS PARATRANSIT	ACTUAL	BUDGET	VARIANCE (%/#)		2017	VARIANCE (%/#)	
			%	#		%	#
<b>TOTAL</b>	<b>20,847</b>	<b>20,035</b>	<b>+4.1%</b>	<b>+812</b>	<b>20,899</b>	<b>-0.2%</b>	<b>-52</b>
<b>WD</b>	<b>19,560</b>				<b>19,630</b>	<b>-0.4%</b>	<b>-70</b>
<b>SA</b>	<b>699</b>				<b>774</b>	<b>-9.7%</b>	<b>-75</b>
<b>SU</b>	<b>588</b>				<b>495</b>	<b>+18.8%</b>	<b>+93</b>
<b>YTD</b>	<b>155,562</b>	<b>152,075</b>	<b>+2.3%</b>	<b>+3,487</b>	<b>152,398</b>	<b>+2.1%</b>	<b>+3,164</b>

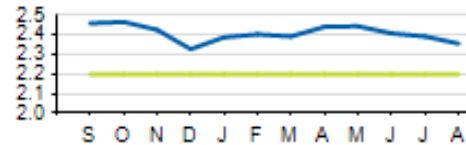


# Access KPIs

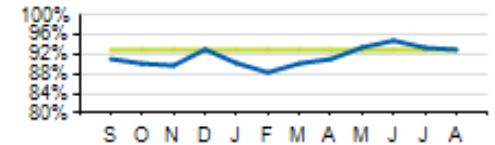
Cost per Passenger



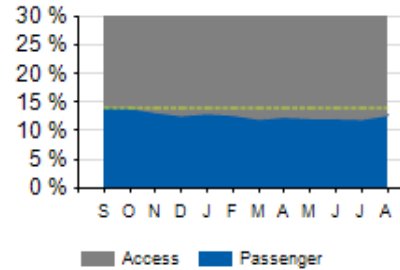
Passengers per Hour



On-Time Performance



Service Cost Sharing



	ACTUAL	KPI	VARIANCE
<b>COST PER PASSENGER</b>	<b>\$32.51</b>	<b>\$32.00</b>	<b>+\$0.51</b>
<b>ON-TIME PERFORMANCE (OTP)</b>	<b>93.0%</b>	<b>93.0%</b>	<b>+0.0%</b>
<b>PASSENGERS PER HOUR</b>	<b>2.36</b>	<b>2.20</b>	<b>+0.16</b>
<b>COST RECOVERY</b>	<b>12.7%</b>	<b>14.0%</b>	<b>-1.3%</b>

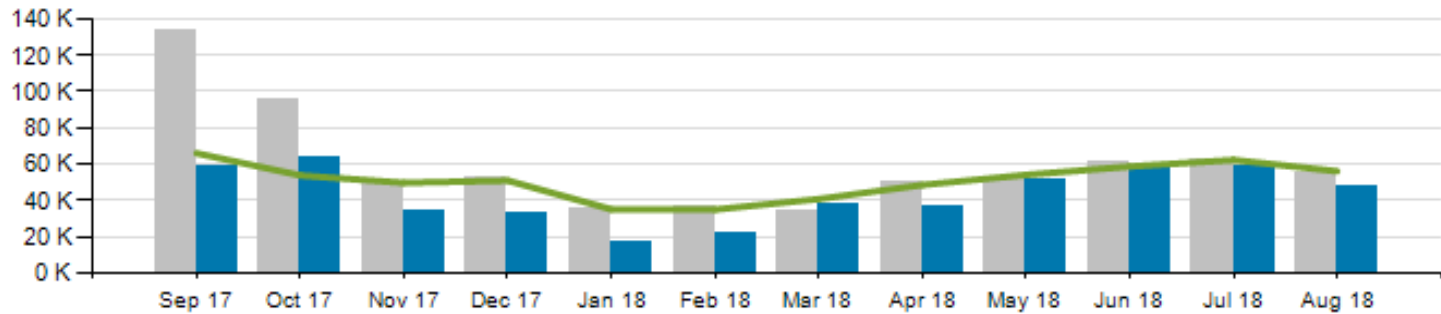
Current year
  KPI





# CB Connector Ridership

Total Ridership

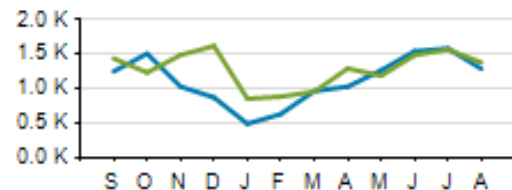


	ACTUAL	BUDGET	VARIANCE (%/#)		FY2017	Variance (%/#)	
<b>TOTAL</b>	<b>47,358</b>	<b>56,149</b>	<b>-15.7%</b>	<b>-8,791</b>	<b>55,049</b>	<b>-14.0%</b>	<b>-7,691</b>
<b>FYTD TOTAL</b>	<b>105,786</b>	<b>118,520</b>	<b>-10.7%</b>	<b>-12,734</b>	<b>117,965</b>	<b>-10.3%</b>	<b>-12,179</b>

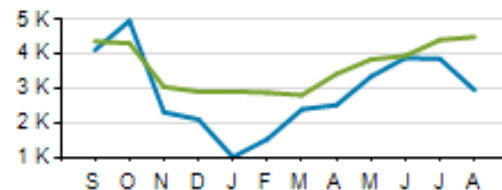
Current Year
  Prior Year
  Budget

# CB Connector KPIs

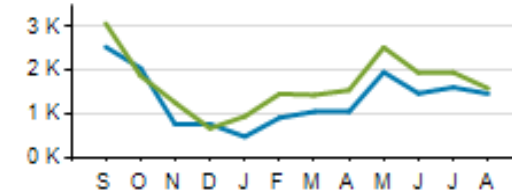
Average Ridership: Weekday



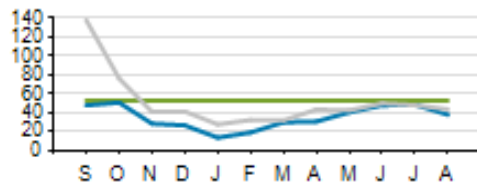
Average Ridership: Saturday



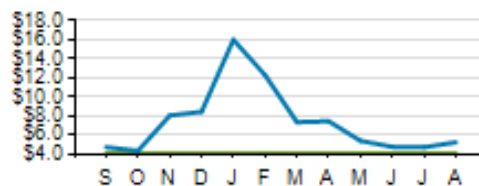
Average Ridership: Sunday



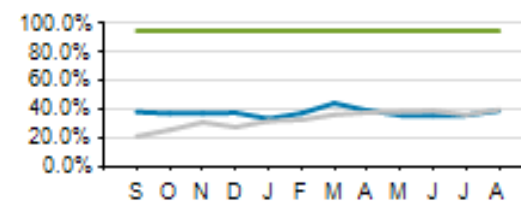
Passengers per Hour



Cost per Passenger



On-Time Performance



	ACTUAL	KPI	VARIANCE
<b>COST PER PASSENGER</b>	<b>\$5.24</b>	<b>\$4.10</b>	<b>+\$1.14</b>
<b>AVERAGE HEADWAY (PEAK/OFF-PEAK)</b>	<b>13:43/15:51</b>	<b>12:00/15:00</b>	<b>+1:43/+0:51</b>
<b>PASSENGERS PER HOUR</b>	<b>37.9</b>	<b>52.8</b>	<b>-14.9</b>
<b>COST RECOVERY</b>	<b>11.6%</b>	<b>14.3%</b>	<b>-2.7%</b>