

go INFO



People you know... go*METRO

February 2013

eNews for Metro Riders

Join Our Mailing List!

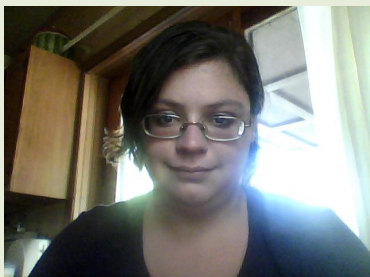
Quick Links

- [Google Transit](#)
- [Commuter Alerts](#)
- [View Schedules](#)
- [Buy Passes Online](#)
- [Metro Website](#)

Connect with Metro



Customer Profile



Why do YOU go Metro?

Dear Dave,

Welcome to the February 2013 edition of go*INFO e-newsletter.

Metro Ridership up 4.2% in 2012



To work, to school, to play and everywhere in between - more people rode Metro last year.

Metro had a 4.2% ridership increase compared to 2011, significantly higher than the national average increase for bus systems. Last year, Metro provided almost 17.4 million passenger trips. Including Access service for people with disabilities, Metro provided almost 17.6 million rides total.

Huge increases in university pass program ridership: In addition, ridership for Metro's student pass programs at local universities is up significantly. Metro had a 24% increase in ridership at the University of Cincinnati and a 19% increase at Cincinnati State in 2012, compared to 2011.

New westside-to-Uptown route also up: Metro's newest route, Rt. 38X Glenway Crossing-Uptown Express, increased ridership by 18% in December 2012 compared to the same time in 2011. Rt. 38X serves Metro's new Glenway Crossing transit center and park & ride, providing

"I ride Metro to get to work and so I can save money so me and my husband can have more date nights. If it was not for Metro I would not be in college."

- Amara-jo Cordelia Becker, Cheviot

*Want to be featured in a future go*INFO Customer Profile? Email your story and photo to areed@go-metro.com. If you are selected to be featured, we'll send you some free ride tickets.*

News

Metro on regular schedule for President's Day

Metro buses will operate on a regular schedule on President's Day, Feb. 18.

Metro administrative offices, the Metro call center and the Metro sales office will be closed on Feb. 18.

For complete bus information visit our [website](#) or call Metro at 513-621-4455 weekdays from 6:30 a.m. to 6 p.m.

2013 Calendar Images



February calendar images available [here](#).

direct service to UC and many Uptown destinations.

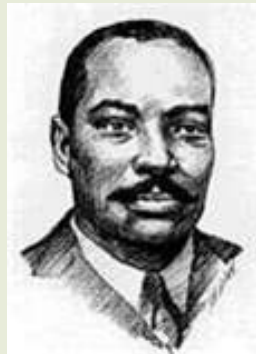
National trend in ridership: Metro's increase is higher than the national trend that shows public transportation ridership increased by 2.6% over the first three quarters of 2011, according to a report released by the American Public Transportation Association. More than 7.9 billion trips were taken on U.S. public transportation in the first three quarters of 2012.

Metro celebrates Black History Month in February

As we celebrate Black History Month in February, let us acknowledge two men who helped change the course of the transportation industry forever.



Garrett A. Morgan, born in 1877, was a prolific inventor who originated a respiratory protective hood (similar to modern gas masks) and patented the first traffic signal. He is credited as the first African American in Cleveland, Ohio, to own an automobile.



Granville T. Woods was an American inventor who held over 50 patents. He invented more than a dozen devices to improve electric railway cars including a system for overhead electric lines to power railroads. Woods was born in Columbus, Ohio, on April 23, 1856.



I Heart Metro Facebook Valentine's Giveaway: Feb. 11-15

Love riding Metro? Enter the "I Heart Metro Valentine's Giveaway" for a chance to win a Metro Zone 1 10-Ride Ticket or a Zone 1 30-Day Rolling Pass. "Like" us on [Facebook](#) and check back starting on Feb. 11 to register and be in the drawing to win and make your Valentine's Day extra sweet!

Share the News

If you know of others who may benefit from the information in this newsletter, use the "Forward email" link at the bottom of this message to send it to them. They will receive this edition of go*INFO and can choose to [subscribe](#) if they would like to continue to receive the newsletter each month.

We're hiring!

Join Metro's team! We are now seeking applicants for several positions. Click [here](#) for additional information.



Want to partner with Metro?

Learn how your company can work with us. Click [here](#) to find out more.

[Forward this email](#)



Try it FREE today.

This email was sent to dwarning@go-metro.com by areed@go-metro.com | [Update Profile/Email Address](#) | Instant removal with [SafeUnsubscribe™](#) | [Privacy Policy](#).

Metro | 602 Main Street | Suite 1100 | Cincinnati | OH | 45202