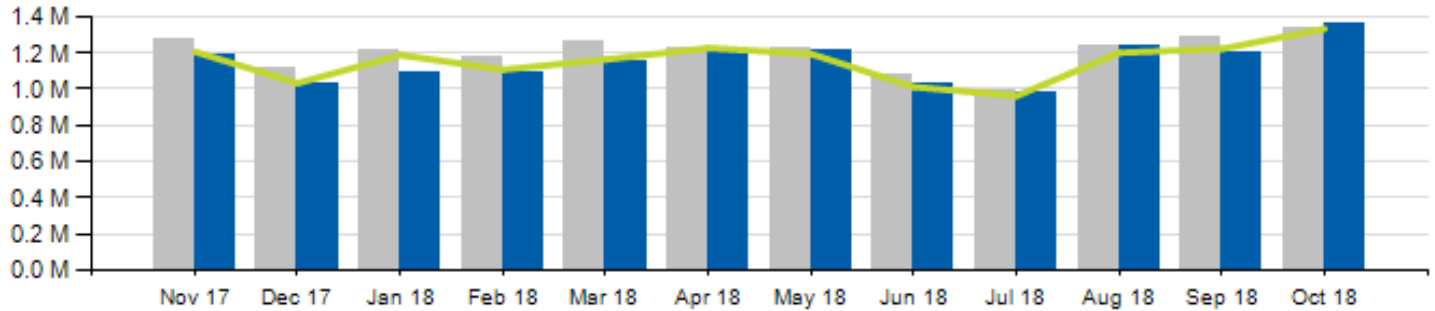


October 2018 Ridership Report

Local/Express Ridership

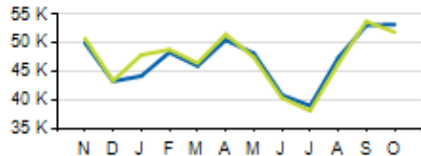
Total Ridership



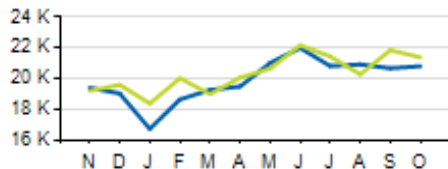
	ACTUAL	BUDGET	VARIANCE (% / #)		2017	VARIANCE (% / #)	
TOTAL	1,360,696	1,333,496	2.0%	27,227	1,342,613	1.3%	18,083
LOCAL	1,275,528	1,245,579	2.4%	29,949	1,258,580	1.3%	16,948
EXPRESS	85,168	87,917	-3.1%	-2,749	84,033	1.4%	1,135
YTD TOTAL	11,566,015	11,612,233	-0.4%	-46,218	12,047,564	-4.0%	-481,549

Local/Express KPIs

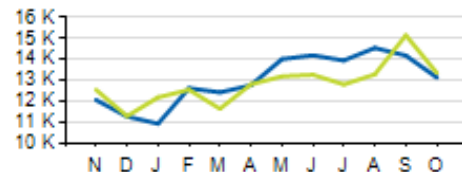
Average Fixed Ridership: Weekday



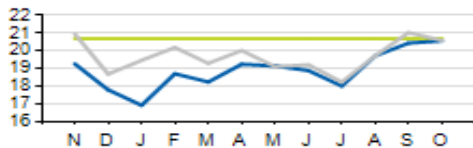
Average Fixed Ridership: Saturday



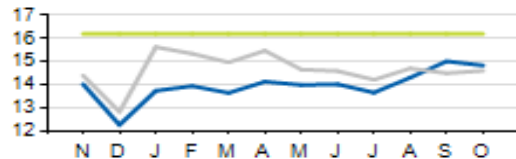
Average Fixed Ridership: Sunday



Passengers per Hour: Local



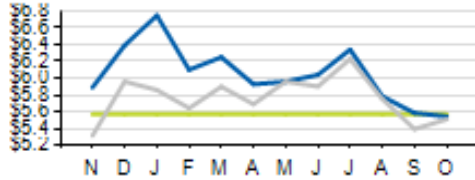
Passengers per Trip: Express



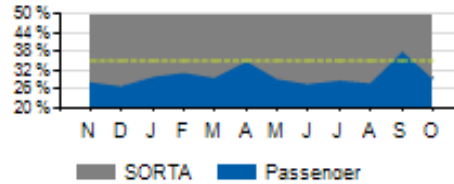
	ACTUAL	KPI/BUDGET	VARIANCE
PASSENGERS PER HOUR (LOCAL)	20.6	20.7	-0.1
PASSENGERS PER TRIP (EXPRESS)	14.8	16.2	-1.4
AVERAGE RIDERSHIP (WD)	53,254	51,934	1,320
AVERAGE RIDERSHIP (SA)	20,819	21,395	-576
AVERAGE RIDERSHIP (SU)	13,141	13,358	-217

Local/Express KPIs

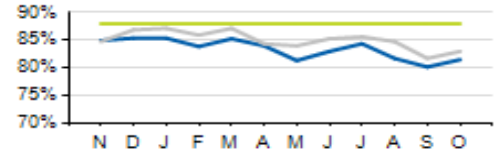
Cost per Passenger: Local



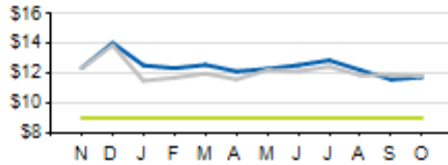
Service Cost Sharing: Express



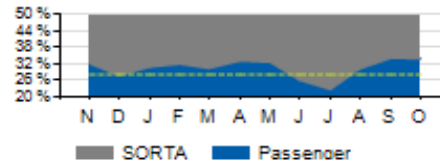
On-Time Performance: Local



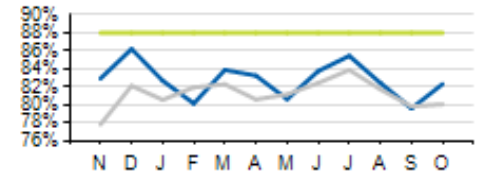
Cost per Passenger: Express



Service Cost Sharing: Local



On-Time Performance: Express

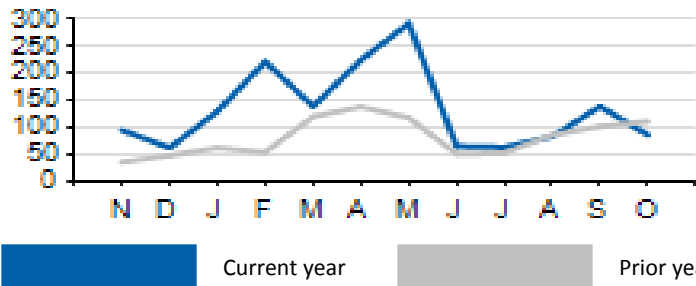


	ACTUAL	KPI	VARIANCE
COST PER PASSENGER (LOCAL)	\$5.55	\$5.57	-\$0.02
COST PER PASSENGER (EXPRESS)	\$11.74	\$9.00	+\$2.74
COST RECOVERY (LOCAL)	29.5%	28.0%	+1.5%
COST RECOVERY (EXPRESS)	33.8%	35.0%	-1.2%
ON TIME PERFORMANCE (LOCAL)	81.4%	88.0%	-6.6%
ON TIME PERFORMANCE (EXPRESS)	82.3%	88.0%	-5.7%

Current year
 Prior year
 KPI

Local/Express Missed Trips

Missed Trips

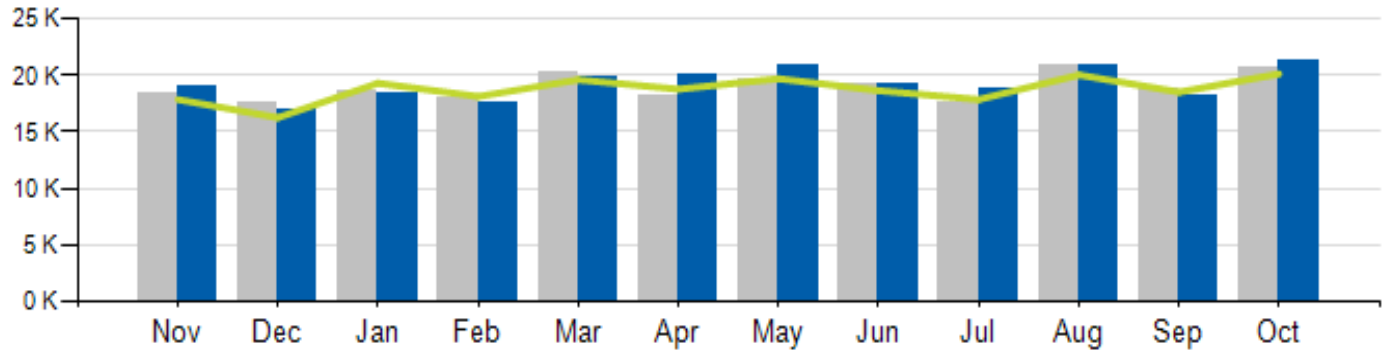


	ACTUAL	TOTAL TRIPS	% OF TRIPS OPERATED
MISSSED TRIPS (ALL SERVICE)	86	68,119	0.1%

REASON FOR MISSED TRIP	ACTUAL	% of MISSED TRIPS
NO OPERATOR AVAILABLE	20	23.3%
MECHANICAL ISSUE	31	36.0%
TRAFFIC INCIDENT	7	8.1%
LATE OPERATIONS	7	8.1%
OTHER	20	23.3%

Access Ridership

Total Ridership

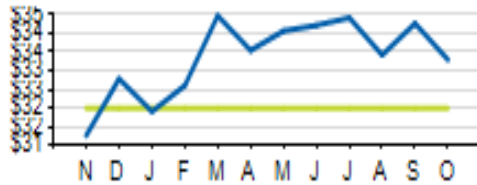


ACCESS PARATRANSIT	ACTUAL	BUDGET	VARIANCE (%/#)		2017	VARIANCE (%/#)	
			%	#		%	#
TOTAL	21,283	20,133	5.7%	1,150	20,614	3.2%	669
WD	19,934				19,181	3.9%	753
SA	778				766	1.6%	12
SU	571				667	-14.4%	-96
YTD	195,112	190,727	2.3%	4,385	191,894	1.7%	3,218

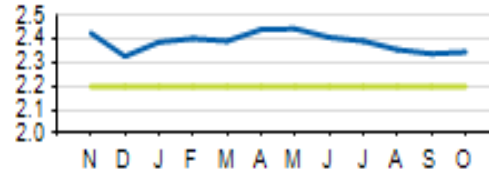


Access KPIs

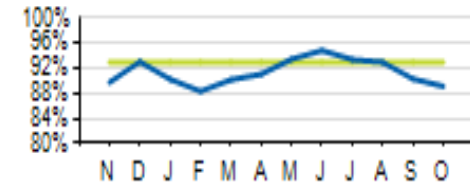
Cost per Passenger



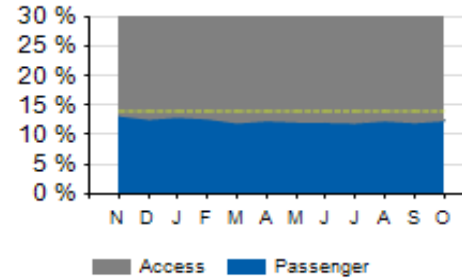
Passengers per Hour



On-Time Performance



Service Cost Sharing



	ACTUAL	KPI	VARIANCE
COST PER PASSENGER	\$33.35	\$32.00	+\$1.35
ON-TIME PERFORMANCE (OTP)	89.1%	93.0%	-3.7%
PASSENGERS PER HOUR	2.35	2.20	+0.15
COST RECOVERY	12.4%	14.0%	-1.6%

Current year
 KPI