

Ridership Performance Report: March 2017

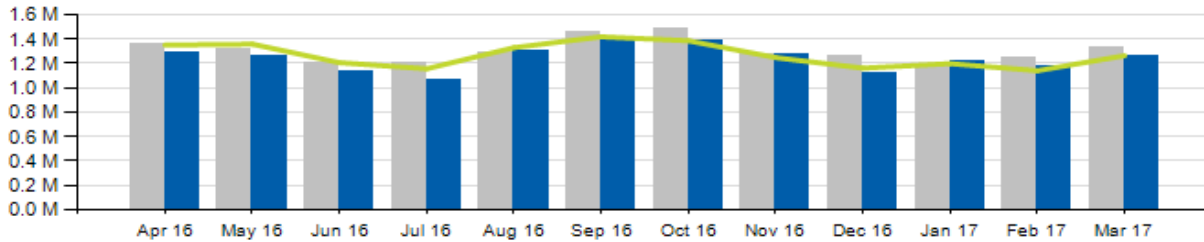


Year-To-Date Ridership

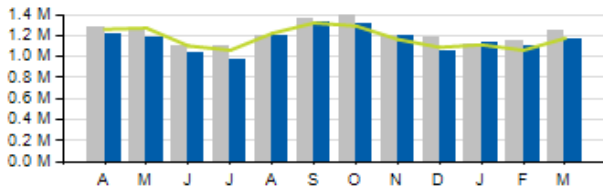
Monthly Ridership

Year-To-Date Ridership						Monthly Ridership					
	2017	2016	% Chg	Budget	% Chg		2017	2016	% Chg	Budget	% Chg
Total	3,654,414	3,775,762	-3.2%	3,600,411	1.5%	Total	1,257,466	1,337,286	-6.0%	1,263,054	-0.4%
Local	3,405,613	3,515,956	-3.1%	3,350,933	1.6%	Local	1,170,011	1,245,315	-6.0%	1,175,585	-0.5%
Express	248,801	259,806	-4.2%	249,478	-0.3%	Express	87,455	91,971	-4.9%	87,469	0.0%

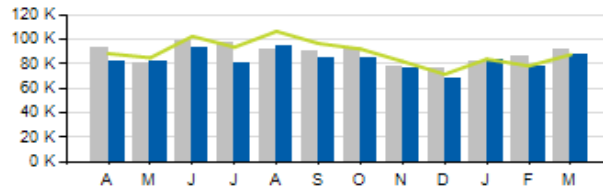
Total Ridership



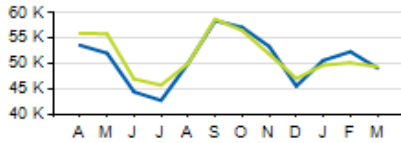
Local Ridership



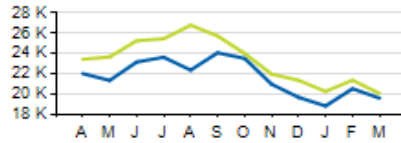
Express Ridership



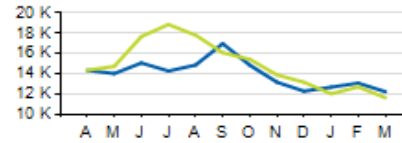
Average Fixed Ridership: Weekday



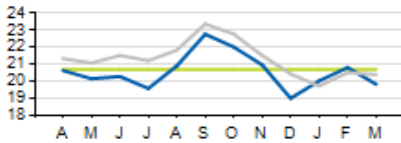
Average Fixed Ridership: Saturday



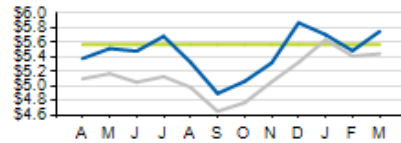
Average Fixed Ridership: Sunday



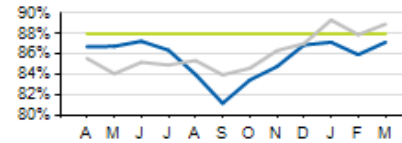
Passengers per Hour: Local



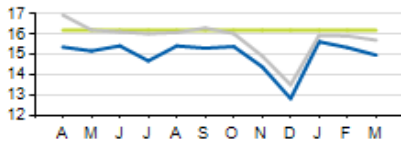
Cost per Passenger: Local



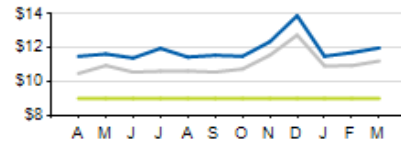
On-Time Performance: Local



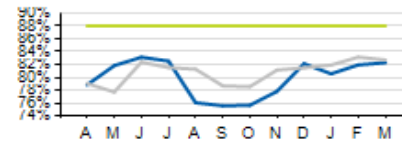
Passengers per Trip: Express



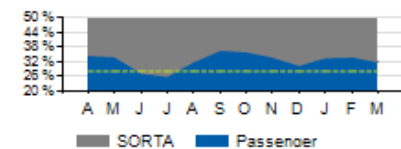
Cost per Passenger: Express



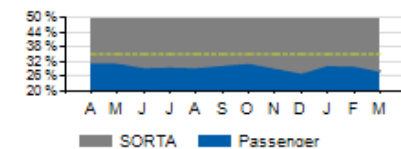
On-Time Performance: Express



Service Cost Sharing: Local



Service Cost Sharing: Express



■ Current Year
 ■ Prior Year
 — Target